

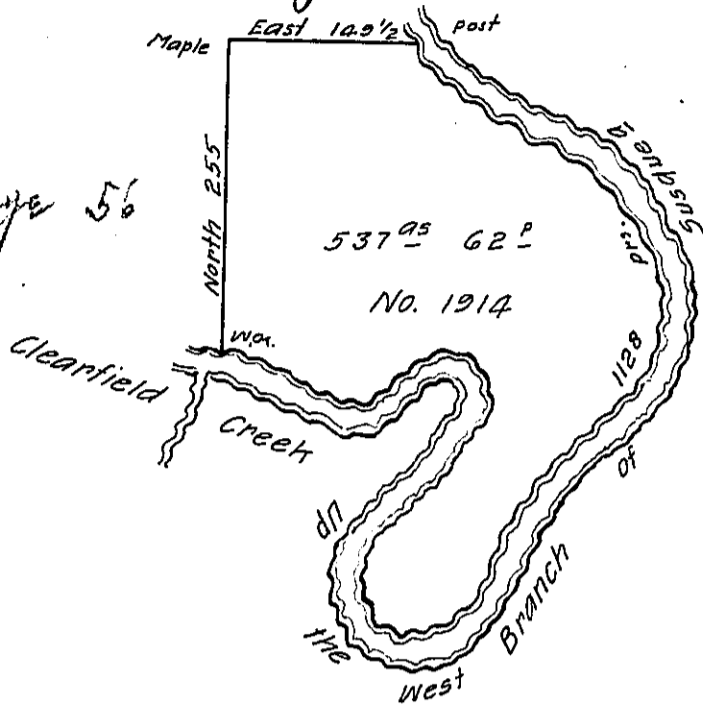
The Courses and Distances Up the river

- S. 18 E. 28
- S. 48 E. 35
- S. 69 E. 95
- S. 54 E. 24
- S. 22 E. 18
- S. 2 E. 34
- S. 15 W. 42
- S. 6 E. 66
- S. 20 E. 43
- S. 3 W. 38
- S. 25 W. 15
- S. 32 W. 53
- S. 43 W. 60
- S. 27 W. 44
- S. 71 W. 21
- N. 75 W. 18
- N. 49 W. 24
- N. 24 W. 27
- N. 16 E. 14
- N. 35 E. 21
- N. 42 E. 74
- N. 14 E. 41
- N. 12 W. 32
- N. 41 W. 26
- W. — 28
- S. 49 W. 86
- W. 19
- N. 68 W. 22
- N. 50 W. 66
- N. 57 W. 16
- 1128

Their other Land

Page 60

Page 56



Situate on the West Branch of Susquehanna River in District No. 3 the Late Purchase Northumb<sup>d</sup> County survey'd 8<sup>th</sup> November 1792 to Robert Morris & Walter Stewart on Warrant dated 26<sup>th</sup> Aug<sup>t</sup> 1792. No. 1914, Containing five hundred and thirty seven acres sixty two pers. & allow<sup>s</sup> of six p. Cent & c.

John Canam D.S.

Dan<sup>l</sup>. Brodhead Esq<sup>r</sup> S.G.

IN TESTIMONY that the above is a copy of the original remaining on file in the Department of Internal Affairs of Pennsylvania, made conformably to an Act of Assembly approved the 16th day of February, 1833, I have hereunto set my Hand and caused the Seal of said Department to be affixed at Harrisburg, this twenty sixth day of December 1905

*Isaac N. Brown*  
Secretary of Internal Affairs.